



Thank you for hiring our slush machine, please follow the below instructions on how to operate and refill the machine using the syrup and bottles we have provided. Please use the camera on your phone to scan the QR code below which will show a quick video on how to use the machine.



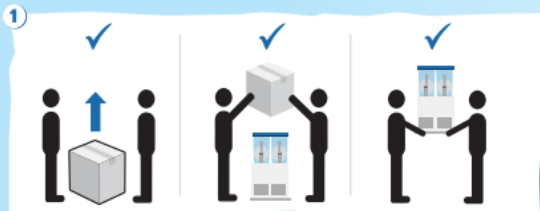
Our Slush machines are easy to use and operate, please watch the video above on how to mix and add the syrup before turning the machine on. Some of our machines can differ and be turned on by pressing either number 1(I) or 2 (II) power buttons, to freeze always press the switch towards the “frozen cup” symbol

1. Fill the empty container provided up to the bottom line with **syrup**, then simply fill the rest of the bottle with **cold water**.
2. Empty the mixed container into the slush machine and repeat the process until the slush machine tank is no more than the **max fill** line.
3. For a double slush machine you will have to mix 4 containers in total to fill both sides of the slush machine.
4. The slush mix should freeze between 30-45 minutes, have extra slush already mixed in a container to slowly top up when the machine is being used.

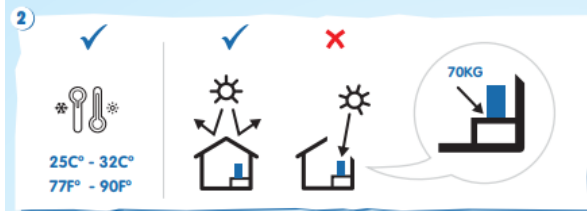
Prior to collection, you must empty and flush the machine thoroughly with warm water



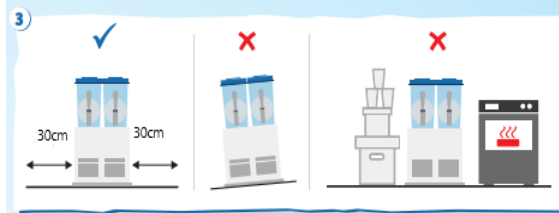
UNPACKING & HANDLING



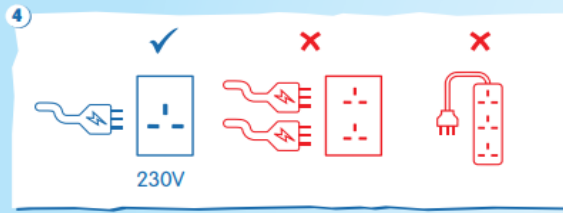
IDENTIFY A SUITABLE LOCATION



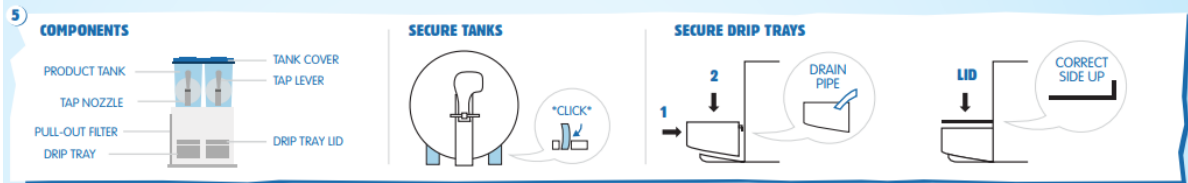
PLACEMENT



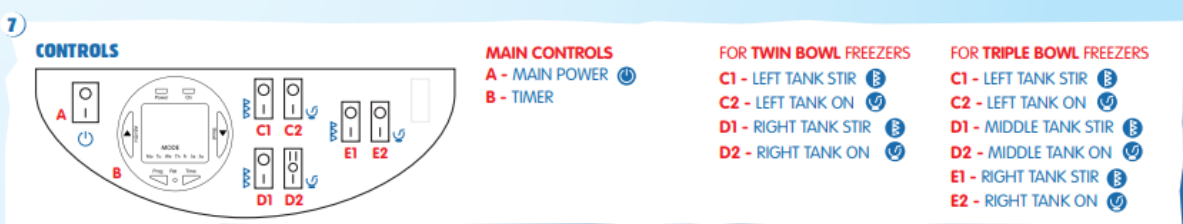
POWER SUPPLY



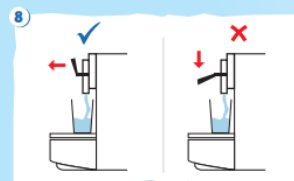
ASSEMBLY



CONTROL PANEL (DOUBLE / TRIPLE BOWL)



POURING PRODUCT



DO'S AND DON'T'S



Prior to collection, you must empty and flush the machine thoroughly with warm water



Prior to collection, you must empty and flush the machine thoroughly with warm water